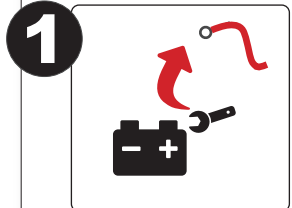


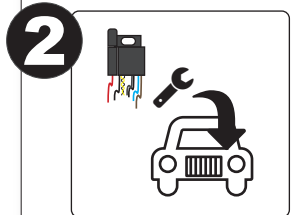
 15-20 MIN

# XCU1150 - DYNAMIC AUXILIARY LIGHT CONTROL



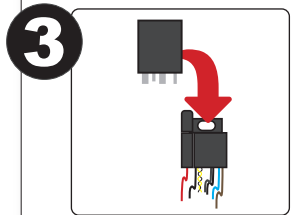
**ALWAYS BE CAREFUL WITH ELECTRONICS!**

**DISCONNECT THE BATTERY BEFORE YOU START WORKING ON THE CAR**

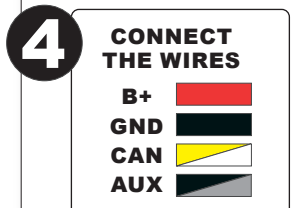


**PLACE THE ECU SOCKET IN THE ENGINE COMPARTMENT ON THE LEFT SIDE**

**MOUNT PROPERLY SO IT CAN'T RATTLE AROUND**

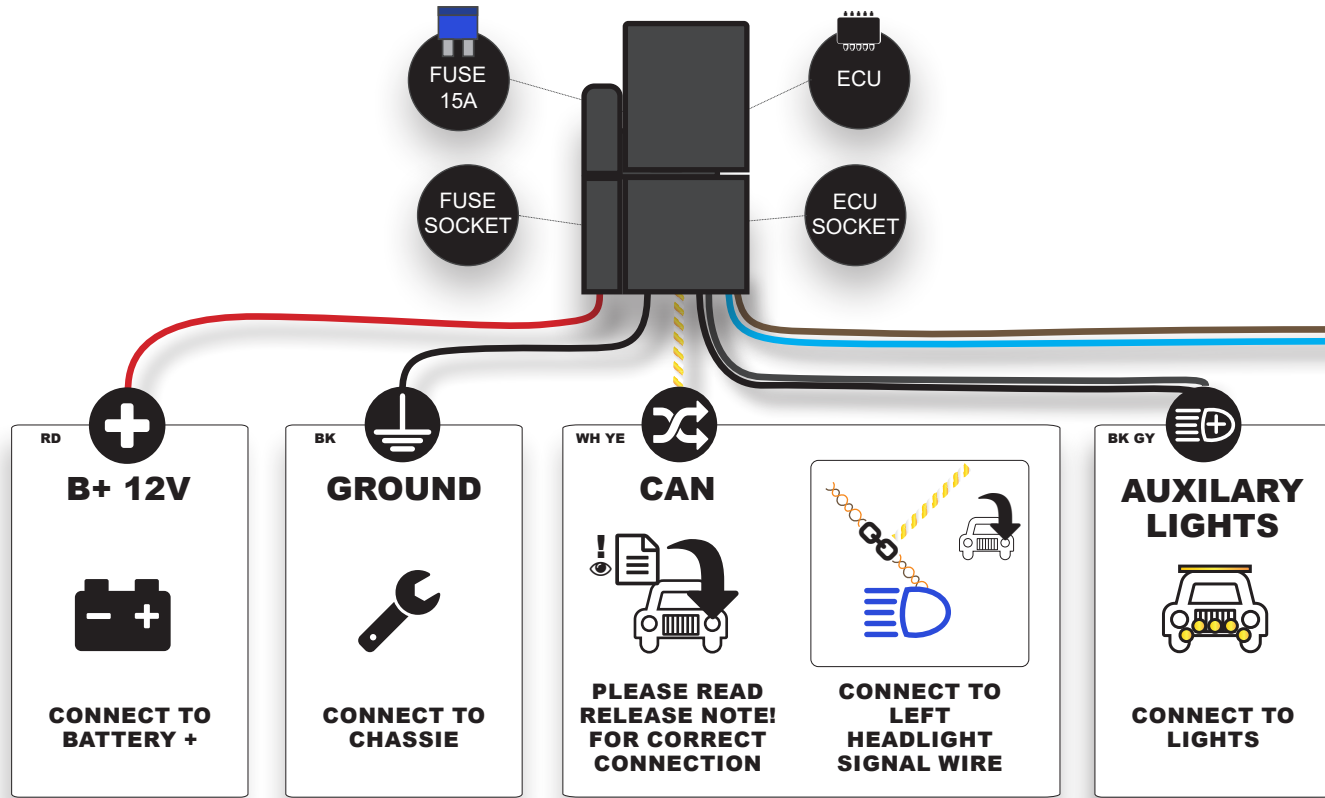


**MOUNT THE ECU IN THE SOCKET**



**CONNECT THE WIRES**

- B+ 
- GND 
- CAN 
- AUX 



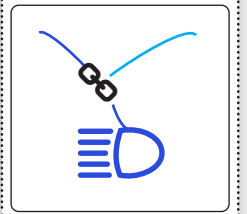
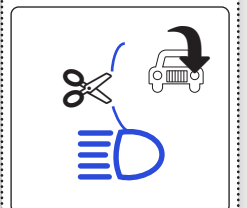
**DISABLE SWITCH**


OPTIONAL  
USE ONLY IF SEPARATE SWITCH IS PREFERRED

**ANALOG SIGNAL**


~~CAN~~

USE ONLY IF NO CAN SIGNAL!







FOR SUPPORT CONTACT YOUR LOCAL DEALER



**IMPORTANT INFO! READ THE RELEASE NOTE FOR YOUR MODEL**



[www.stonehillparts.se](http://www.stonehillparts.se)



**6 SEC**  
CALIBRATE ECU AFTER INSTALLATION PULL AND HOLD

